



**Beneteau First 36.7 North American Championship
September 15 - 17, 2017
Youngstown Yacht Club
Youngstown, NY USA**

SAILING INSTRUCTIONS

1 RULES

The regatta will be governed by the rules as defined in The Racing Rules of Sailing, US Sailing prescriptions shall apply as stated in the Notice of Race (NOR), NOR Addendum 1 and the Beneteau 36.7 Class rules.

2 NOTICES TO COMPETITORS

Notices to competitors will be posted on the official notice board located in the YYC Chart Room.

3 CHANGES TO SAILING INSTRUCTIONS

Any change to the sailing instructions will be posted before 0830 on the day it will take effect, except that any change to the schedule of races will be posted by 1900 on the day before it will take effect.

4 SIGNALS MADE ASHORE

- 4.1 Signals made ashore will be displayed at the flagpole adjacent to the Youngstown Yacht Club clubhouse.
- 4.2 When flag AP is displayed ashore, '1 minute' is replaced with 'not less than 60 minutes' in the race signal AP.

5 SCHEDULE OF RACES

- 5.1 Three races are scheduled for Friday and Saturday, and two races are scheduled on Sunday. One additional race may be scheduled per day.
- 5.2 Schedule:
 - Friday September 15th: 1100 First warning
 - Saturday September 16th: 1100 First warning
 - Sunday September 17th: 1000 First warning
 - Sunday September 17th: 1400 No warning after this time
- 5.3 Flag A displayed, with no sound, while boats are finishing means 'No more racing today'.

6 CLASS FLAGS

The class flag will display the First Beneteau 36.7 class insignia.

7 RACE AREA

The area will be on the waters of Lake Ontario adjacent to the Niagara River. See Addendum 1 for race area diagram.

8 THE COURSES

- 8.1 The diagrams in Addendum 2 show the courses, the order in which marks are to be passed, and the side on which the mark is to be left. Course number will be signaled no later than the warning signal.
- 8.2 No later than the warning signal, the race committee signal boat will display the approximate distance between the signal boat and mark 1.
- 8.3 No later than the warning signal, the race committee signal boat will display the approximate magnetic bearing from the signal boat to mark 1.
- 8.4 The leeward mark will be a gate. In the event that the gate is not in place, the single leeward mark shall be rounded to port.
- 8.5 Mark 1 will have an offset mark 1a. In the event the offset is not in place, the single windward Mark 1 shall be left to port.

9 MARKS

- 9.1 Mark 1 will be an orange tetrahedron
- 9.2 Mark 1a will be a white spherical mark
- 9.3 Marks 2s and 2p will green tetrahedrons
- 9.4 New marks, as provided in SI 11 will be yellow tetrahedrons.
- 9.5 If a change is made to mark 2 (gate) marks 2s and 2p will be replaced by a single yellow tetrahedron to be left to port.
- 9.6 The starting mark will be a port-end boat with a staff displaying an orange flag. A yellow cylinder starting mark may be substituted without notice.
- 9.7 The finishing mark will be an orange tetrahedron mark

10 THE START

- 10.1 The starting line will be between a staff displaying an orange flag on the committee signal boat at the starboard end and a port end staff displaying an orange flag.
- 10.2 When a yellow cylinder starting mark is substituted for the port-end staff displaying an orange flag, the starting line will be between a staff displaying an orange flag on the committee signal boat at the starboard end and the course side of the port-end starting mark.
- 10.3 A boat that does not start within 5 minutes after her starting signal will be scored Did Not Start without a hearing. This changes RRS A4 and A5.
- 10.4 If any part of a boat's hull, crew or equipment is on the course side of the starting line at her starting signal and she is identified, the race committee will attempt to broadcast her bow number and/or sail number on VHF channel 69. Failure to make a broadcast or to time it accurately will not be grounds for a request for redress. This changes rule 62.1(a).

11 CHANGE OF THE NEXT LEG OF THE COURSE

To change the next leg of the course, the race committee will lay a new mark (or move the finish line) and remove the original mark as soon as practicable. When in a subsequent change a new mark is replaced, it will be replaced by an original mark.

12 THE FINISH

The finishing line will be between a staff displaying an orange flag on a race committee boat at the starboard end and the course side of the port-end finishing mark.

13 PENALTY SYSTEM

- 13.1 A boat may take a One-Turn Penalty when she may have broken a rule of Part 2 or rule 31 while racing. However, when she may have broken a rule of Part 2 while in the zone around a mark other than a starting mark, her penalty shall be a Two-Turns Penalty. This changes RRS 44.1.
- 13.2 Protest Arbitration (a) Appendix T (Arbitration) applies and T1(b) is replaced with "A Post-Race Penalty is a 50% Scoring Penalty calculated as stated in rule 44.3(c). However, rule 44.1(a) applies.

14 TIME LIMITS

- 14.1 If no boat has finished within two and one half hours, the race will be abandoned.
- 14.2 Rule 35 is changed so that boats finishing more than thirty minutes after the first boat to finish will be scored Time Limit Expired (TLE).

15 PROTESTS AND REQUEST FOR REDRESS

- 15.1 Protest forms are available at the race office located in the YYC Chart Room. Protests or requests for redress or reopening shall be delivered within the appropriate time limit.
- 15.2 The protest time limit is 45 minutes from the time the Signal Boat docks and shall be submitted to the Jury Secretary in the YYC Chart Room.
- 15.3 Notices will be posted no later than 30 minutes after the protest time limit to inform competitors of hearings in which they are parties or named as witnesses. Hearings will be held in the protest room located in the YYC Grist Mill building Sailing Office. Time of hearings will be posted with meeting notices.
- 15.4 Breaches of SIs 17,18.1 22.1 and 22.2 will not be grounds for a protest by a boat. This changes RRS 60.1(a). Penalties for these breaches may be less than disqualification.
- 15.5 On the last scheduled day of racing a request for redress based on a protest committee decision shall be delivered to the Jury Secretary no later than 30 minutes after the decision was posted. This changes rule 62.2.
- 15.6 Protestor or requestor of redress shall notify the race committee verbally of a protest or request for redress at the end of the race or, if not feasible, the next earliest opportunity. Notification shall include protestor and protestee bow number (or skipper name) and race number the incident occurred. Example ... "Bow 10 protests Bow 12 in race number 3". Notification of a request for redress requires the requesting skipper name and/Bow number with applicable race number.
- 15.7 Race committee shall acknowledge the hail and record the protest or redress information on the race results sheet.
- 15.8 Race committee will notify the Jury Secretary of the protest within 15 min of coming ashore after fleet racing concludes.

16 SCORING

When fewer than 6 races have been completed, a boat's series score will be the total of her race scores. When 6 or more races have been completed, a boat's series score will be the total of her scores excluding her worst score. This changes RRS Appendix A2.1.

17 HAUL OUT RESTRICTIONS

No boat shall be hauled out during the regatta except with and according to the terms of prior written permission of the jury for damage inspection or repair.

18 RADIO COMMUNICATIONS

- 18.1 Except in an emergency, a boat shall neither make radio transmissions while racing nor receive radio communications not available to all boats. This restriction also applies to mobile telephones and other electronic devices.
- 18.2 The race committee intends to use VHF marine radio frequencies to broadcast courtesy information, including OCS hails after starts, to competitors. Failure of a boat to hear a broadcast by the race committee will not be grounds for redress.
- 18.3 VHF channel 69 will be the designated channel for courtesy broadcasts. The race committee may change the courtesy channel by posting a signboard on the signal boat prior to the warning signal for each race or by posting on the official notice board.

19 PRIZES

- 19.1 Overall prizes will be awarded to the top five boats, the top boat racing with no World Sailing Classification Group 3 sailors (Corinthian scoring), and the top boat with three or more members of the same family.
- 19.2 Daily prizes will be awarded each evening.

20 DISCLAIMER OF LIABILITY

Competitors participate in the regatta entirely at their own risk. See rule 4, Decision to Race. The organizing authority will not accept any liability for material damage or personal injury or death sustained in conjunction with or prior to, during, or after the regatta.

21 INSURANCE

Each participating boat shall be insured with valid third-party liability insurance with a minimum cover of US\$300,000 per incident or the equivalent.

22 SAFETY REGULATIONS

- 22.1 Prior to the warning signal of her first race each day, a boat shall pass the stern of the race committee signal boat, hail or display her bow number and be acknowledged by the race committee.
- 22.2 A boat that retires from a race or does not intend to compete in a race after checking in shall notify the race committee as soon as possible.

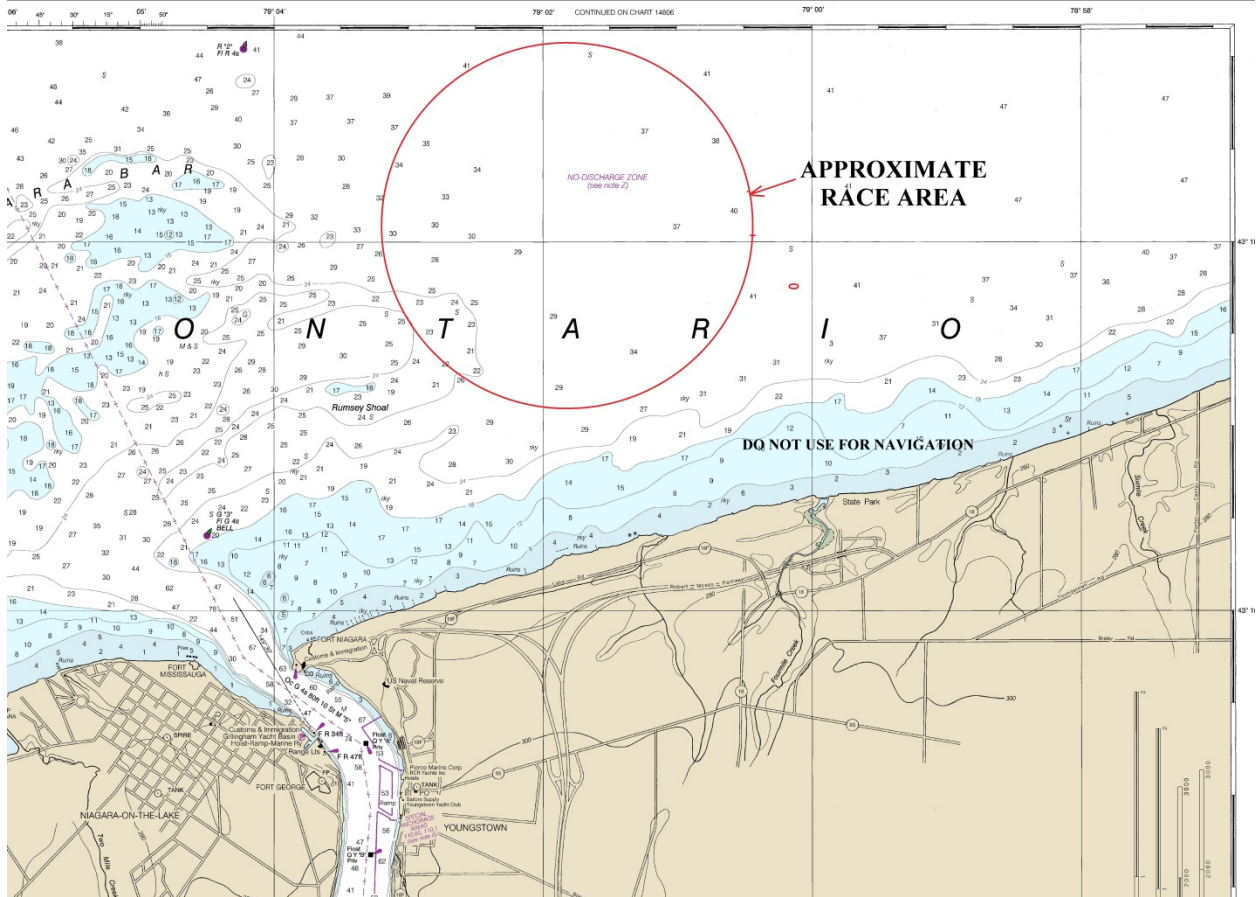
23 REPLACEMENT OF CREW OR EQUIPMENT

Substitution of competitors or sails will not be allowed without prior written approval of the race committee.

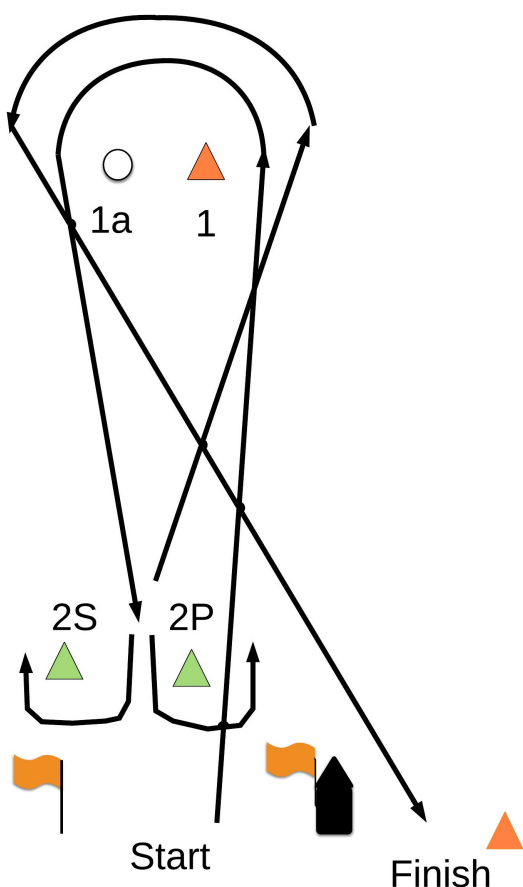
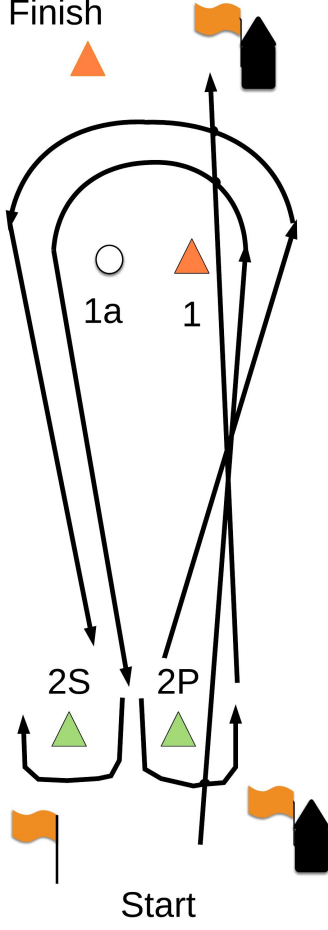
24 EQUIPMENT AND MEASUREMENT CHECKS

A boat or equipment may be inspected at any time for compliance with the class rules and sailing instructions. On the water, a boat can be instructed by a race committee equipment inspector or measurer to proceed immediately to a designated area for inspection.

ADDENDUM 1 RACE AREA



ADDENDUM 2 COURSE DIAGRAMS

 <p>The diagram for Course 1 shows a golf course layout with a Start point at the bottom center, marked with a black house icon and an orange flag. Two green triangles labeled 2S and 2P are positioned above the Start. From 2S and 2P, paths lead to a hole (white circle) labeled 1a and a green triangle labeled 1. From 1a and 1, paths lead to a black house icon and an orange flag labeled Finish at the bottom right. Arrows indicate the direction of play.</p> <p>COURSE 1</p>	 <p>The diagram for Course 2 shows a similar layout to Course 1, but with the Finish point at the top center, marked with a black house icon and an orange flag. The Start point is at the bottom center, marked with a black house icon and an orange flag. The hole 1a and green triangle 1 are in the middle. The hole 1a and green triangle 1 are positioned above the Start. From 1a and 1, paths lead to a black house icon and an orange flag labeled Finish at the top center. Arrows indicate the direction of play.</p> <p>COURSE 2</p>
<p>Start – 1 – 1a – 2 – 1 – 1a – Finish</p>	<p>Start – 1 – 1a – 2 – 1 – 1a – 2 – Finish</p>